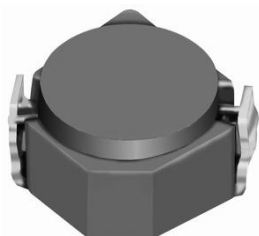


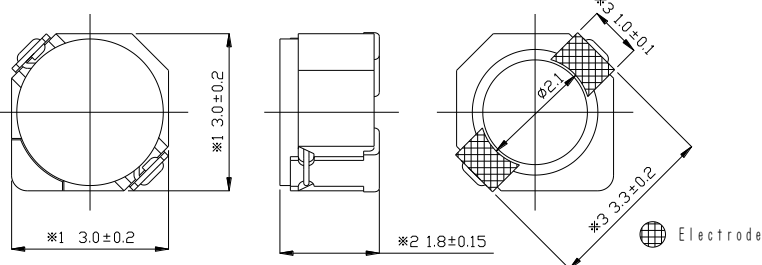
SMD Power Inductor CDRH2D18B/HP



Description

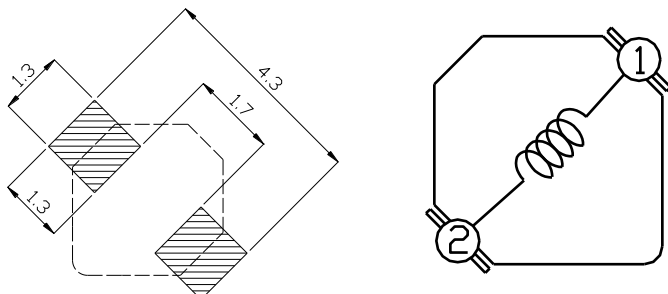
- Ferrite drum core construction.
- Magnetically shielded.
- L × W × H: 3.2 × 3.2 × 1.95mm Max.
- Product weight: 60mg(Ref.)
- Moisture Sensitivity Level: 1
- RoHS compliance.

Dimension - [mm]



- ※1 Not including terminal dimension. ※2 The pin can not overstep the drum core.
 ※3 Electrode dimension.

Land pattern and Schematics - [mm]



Electrical Characteristics

Part Name	Stamp	Inductance (μH) [within] ※1	D.C.R. (mΩ) Max. (Typ.) (at 20°C)	Saturation Current (A) ※2		Temperature Rise Current (A) ※3
				(at 20°C)	(at 100°C)	
CDRH2D18B/HPNP-1R3NC	A	1.3±25%	66(53)	2.20	1.80	1.80
CDRH2D18B/HPNP-2R2NC	C	2.2±25%	88(70)	1.70	1.50	1.48
CDRH2D18B/HPNP-3R3NC	E	3.3±25%	103(82)	1.32	1.10	1.30
CDRH2D18B/HPNP-4R7NC	G	4.7±25%	163(130)	1.20	1.05	1.00
CDRH2D18B/HPNP-6R8NC	I	6.8±25%	241(193)	1.05	0.90	0.80
CDRH2D18B/HPNP-100MC	K	10±20%	306(245)	0.88	0.76	0.70
CDRH2D18B/HPNP-150MC	M	15±20%	536(429)	0.70	0.60	0.48
CDRH2D18B/HPNP-220MC	P	22±20%	658(526)	0.58	0.50	0.45

※1 Inductance measuring condition: at 100 kHz.

※2 Saturation current: The DC current at which the inductance decreases to 65% of its nominal value.

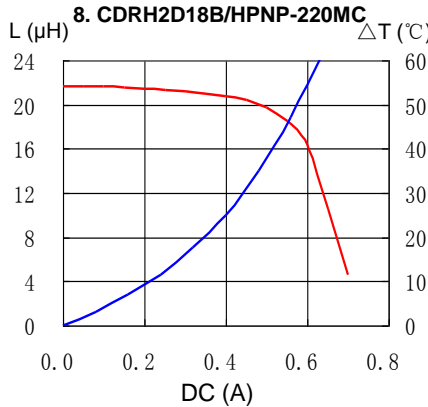
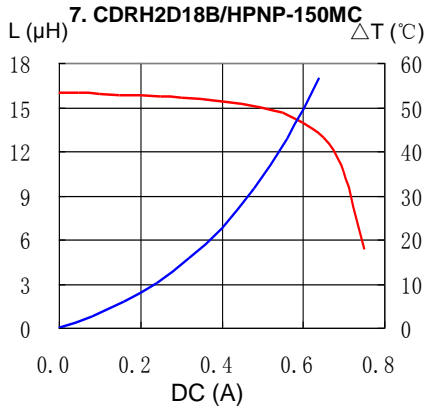
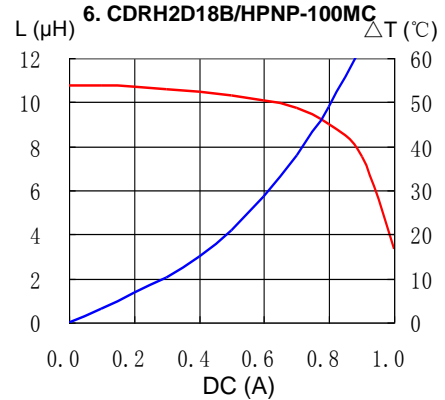
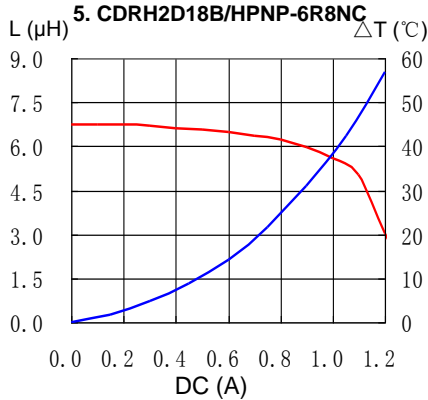
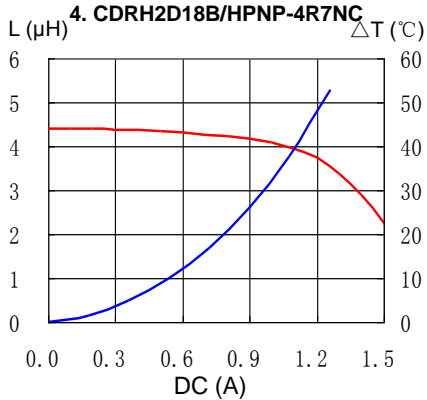
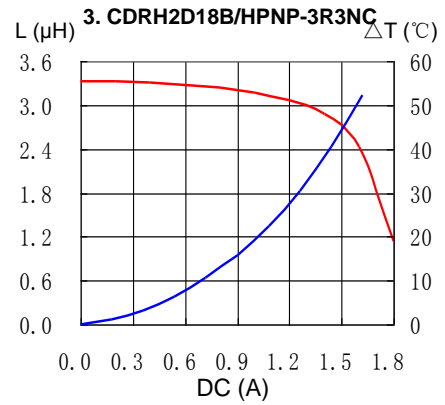
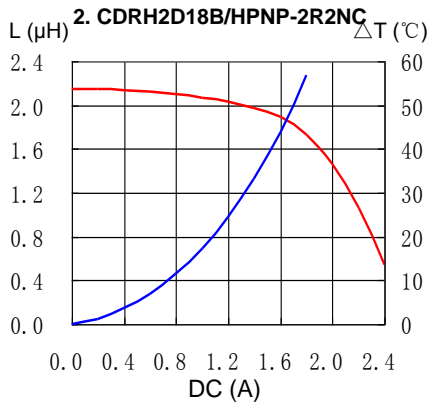
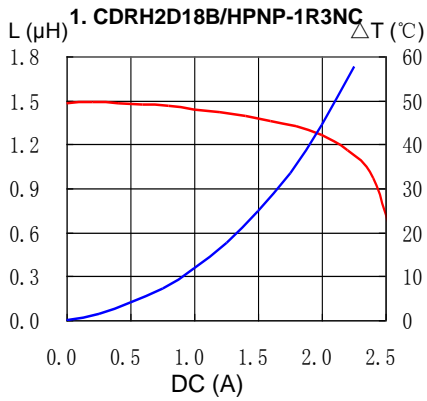
※3 Temperature rise current: The DC current at which the temperature rise is ΔT=40°C.(Ta=20°C)

SMD Power Inductor CDRH2D18B/HP

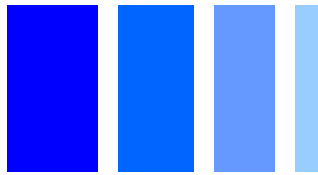


Saturation Current & Temperature Rise Graph

— L (20°C) — ΔT

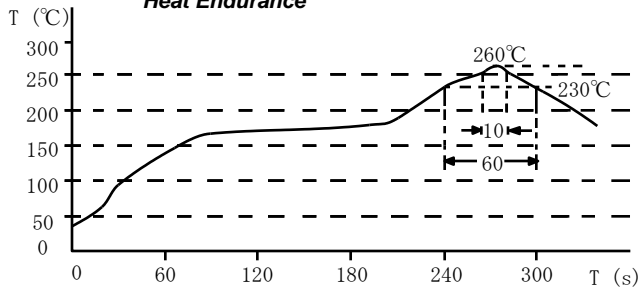


SMD Power Inductor CDRH2D18B/HP

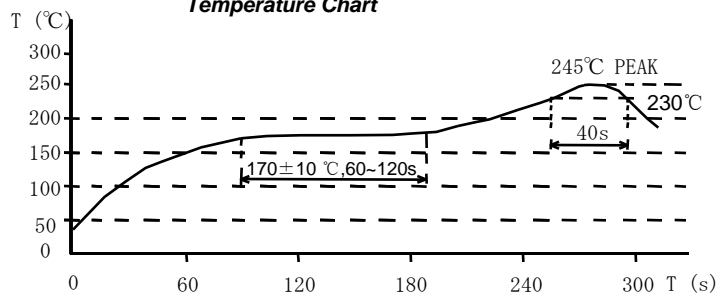


Solder Reflow Condition

Heat Endurance



Temperature Chart



Please refer to the sales offices on our website - <http://www.sumida.com>

Hong Kong

Tel.+852-2880-6781
FAX.+852-2565-9600
sales@hk.sumida.com

Saitama(Japan)

Tel.+81-48-691-7300
FAX.+81-48-691-7340
sales@jp.sumida.com

Chicago

Tel.+1-847-545-6700
FAX. +1-847-545-6720
sales@us.sumida.com

Shanghai

Tel.+86-21-5836-3299
FAX.+86-21-5836-3266
shanghai.sales@cn.sumida.com

Seoul

Tel.+82-2-6237-0777
FAX.+82-2-6237-0778
sales@kr.sumida.com

Obernzell

Tel.+49-8591-937-0
FAX. +49-8591-937-103
contact@eu.sumida.com

Shenzhen

Tel.+86-755-8291-0228
FAX.+86-755-8291-0338
shenzhen.sales@cn.sumida.com

Singapore

Tel.+65-6296-3388
FAX.+65-6841-4426
sales@sg.sumida.com

Neumarkt

Tel.+49-9181-4509-110
FAX. +49-9181-4509-310
infocomp@eu.sumida.com

Taipei

Tel.+886-2-8751-2737
FAX.+886-2-8751-2738
sales@tw.sumida.com

San Jose

Tel.+1-408-321-9660
FAX.+1-408-321-9308
sales@us.sumida.com