

Customer Information Sheet

DRAWING No.: S1621-XX

SHEET 2 OF 2

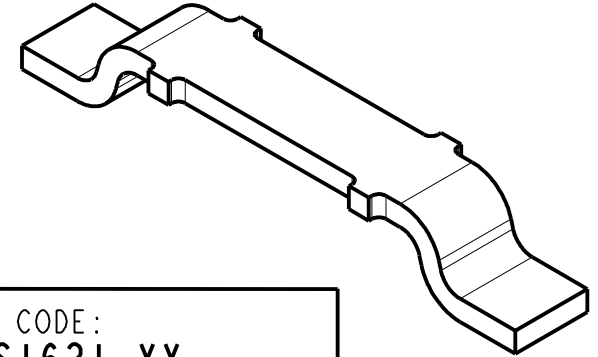
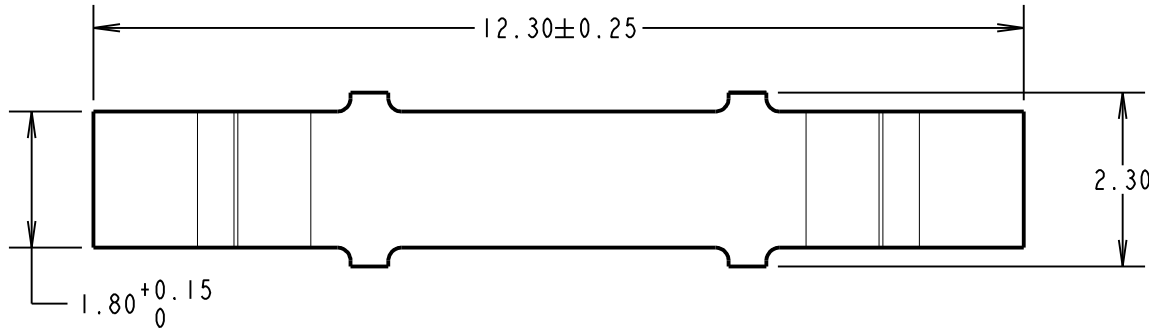
IF IN DOUBT - ASK

©

NOT TO SCALE

THIRD ANGLE PROJECTION

ALL DIMENSIONS IN mm

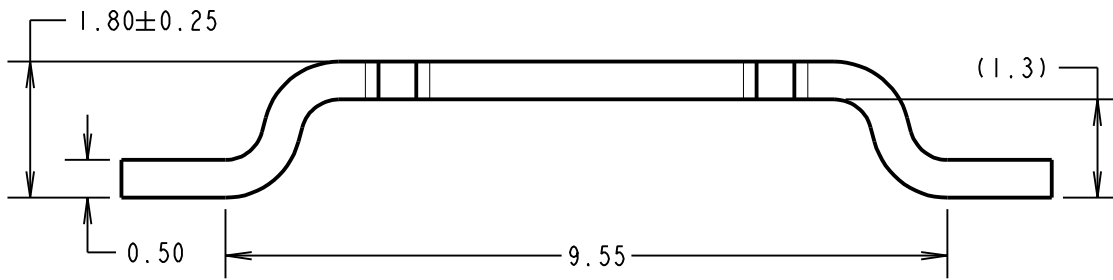


ORDER CODE:
S1621-XX

FINISH _____

~~06 = 4µ 90/10 TIN/LEAD OVER NICKEL~~
46 = 3µ 100% TIN OVER NICKEL

OBSOLETE



COMPONENT SPECIFICATION:

MATERIAL = BRASS CW508L 1/2 HARD

FINISH

~~06 = 4µ 90/10 TIN/LEAD~~

46 = 4µ 100% TIN

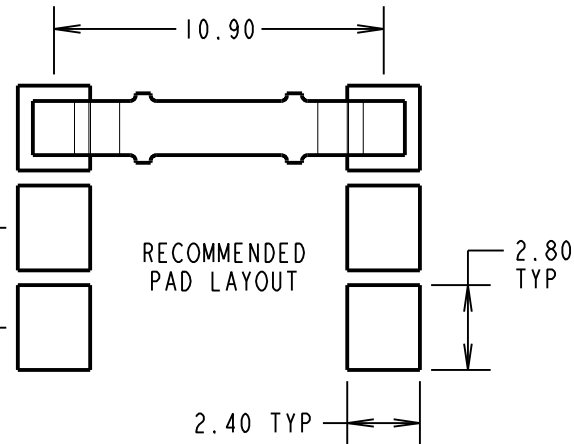
ELECTRICAL:

CURRENT RATING = 10A (30°C TEMP RISE)

CONTACT RESISTANCE = 20mΩ MAX

ENVIRONMENTAL:

OPERATING TEMPERATURE = -40°C TO +125°C



1. FOR TAPE AND REELED COMPONENT, SEE DRAWING S162-XXR.
2. PACKING: 1000 COMPONENTS PER BAG.

MSP	11	12.10.15	13113
NAME	ISS.	DATE	C/NOTE
APPROVED:		M.PERREN	
CHECKED:		S.BENNETT	
DRAWN:		W. J. BOURNE	
CUSTOMER REF.:			
ASSEMBLY DRG:			

HARWIN

www.harwin.com
technical@harwin.com

THIS DRAWING AND ANY INFORMATION OR DESCRIPTIVE MATTER SET OUT HEREON ARE CONFIDENTIAL AND COPYRIGHT PROPERTY OF THE HARWIN GROUP AND MUST NOT BE DISCLOSED, LOANED, COPIED OR USED FOR MANUFACTURING, TENDERING OR FOR ANY OTHER PURPOSE WITHOUT THEIR WRITTEN PERMISSION.

TOLERANCES

X. = ±1mm
X.X = ±0.50mm
X.XX = ±0.10mm
X.XXX = ±0.01mm
ANGLES = ±5°
UNLESS STATED

MATERIAL:

BRASS CW508L

FINISH: SEE ORDER CODE

S/AREA:

mm²

TITLE:

SURFACE MOUNT JUMPER
(LOOSE)

DRAWING NUMBER:

S1621-XX

SHT
2 OF 2